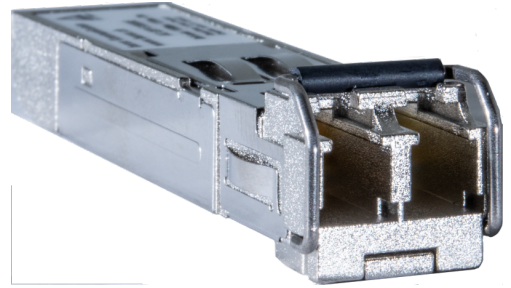


AC-SFP-FXMME en

SFP module

- Data rate: 100MBit/s
- Fibre type: Multimode
- Fibre count: 2



Small Form-factor Pluggables (SFP) serve as small standardized modules for network connections. The devices are designed as interconnect plugs for extremely fast network connections and can be inserted into various switches.



Technical data

SFP features

Fibre type / Conductor type	Multimode
Fibres required	2
Data rate	100 Mbit/s

SFP Specs

operating temperature	-40°C ... +85°C
Transmission distance (max)	2 km
Connector	LC duplex
Centre wavelength RX	1310nm
Centre wavelength TX	1310nm
Min. optical transmitting power	-23,5dBm
Max. optical transmitting power	-14dBm
Optical sensitivity	-31dBm
Max. optical input power	-8dBm
Optical budget	7,5dB
Line attenuation (min)	0dB

Version 26.04.2022, Changes without notice